



## CITY OF SEDALIA

Municipal Building  
200 South Osage Avenue  
Sedalia, Missouri 65301

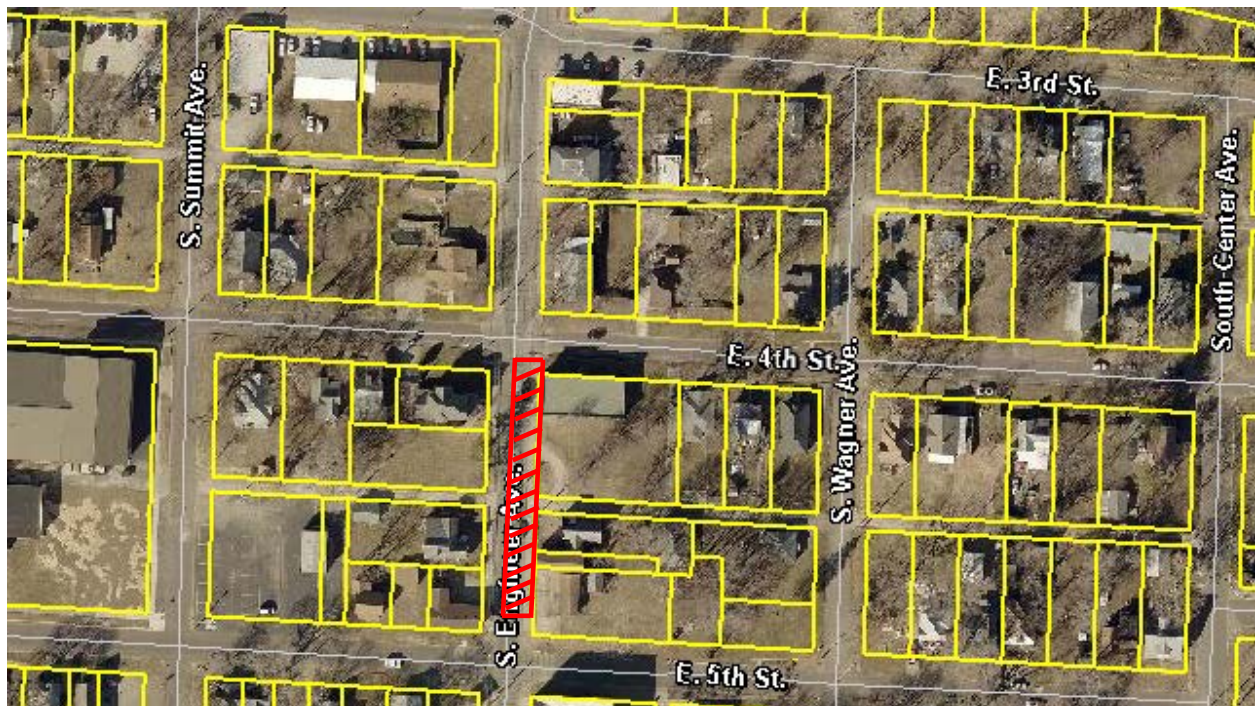
# PUBLIC SERVICE ANNOUNCEMENT

Contact: Public Works  
Phone: (660) 827-3000, ext. 1166

FOR IMMEDIATE RELEASE  
9:00 A.M. CDST, AUGUST 1, 2019

### **EMERGENCY ROAD REPAIRS: LANE RESTRICTION S. ENGINEER AVE. BETWEEN E. 4<sup>TH</sup> ST. AND E. 5<sup>TH</sup> ST.**

(SEDALIA, MISSOURI): The Street Division is working to repair a road surface failure in the area just south of the intersection of S. Engineer Ave. and E. 4<sup>th</sup> St. While work is being completed, S. Engineer Ave. will be reduced to one lane, flaggers may be present and periodic road closure may occur to allow for heavy equipment to operate in and around the roadway. Work began at 7:00 a.m. on Thursday, August 1, 2019 and is scheduled to be completed by Friday, August 9, 2019 at 4:00 p.m., weather dependent.



Motorists should anticipate delays in the area and are encouraged to seek an alternate route while work is being completed.

We apologize for any inconvenience this road repair work may cause as we work to improve the City's infrastructure.

**WHEN: 7:00 A.M., THURS., AUG. 1, 2019 TO FRI., AUG. 9, 2019**

**WHERE: S. ENGINEER AVE. BETWEEN E. 4<sup>TH</sup> ST. AND E. 5<sup>TH</sup> ST.**

**WHY: EMERGENCY ROAD REPAIRS -- LANE RESTRICTIONS/FLAGGERS**