



## CITY OF SEDALIA

Municipal Building  
200 South Osage Avenue  
Sedalia, Missouri 65301

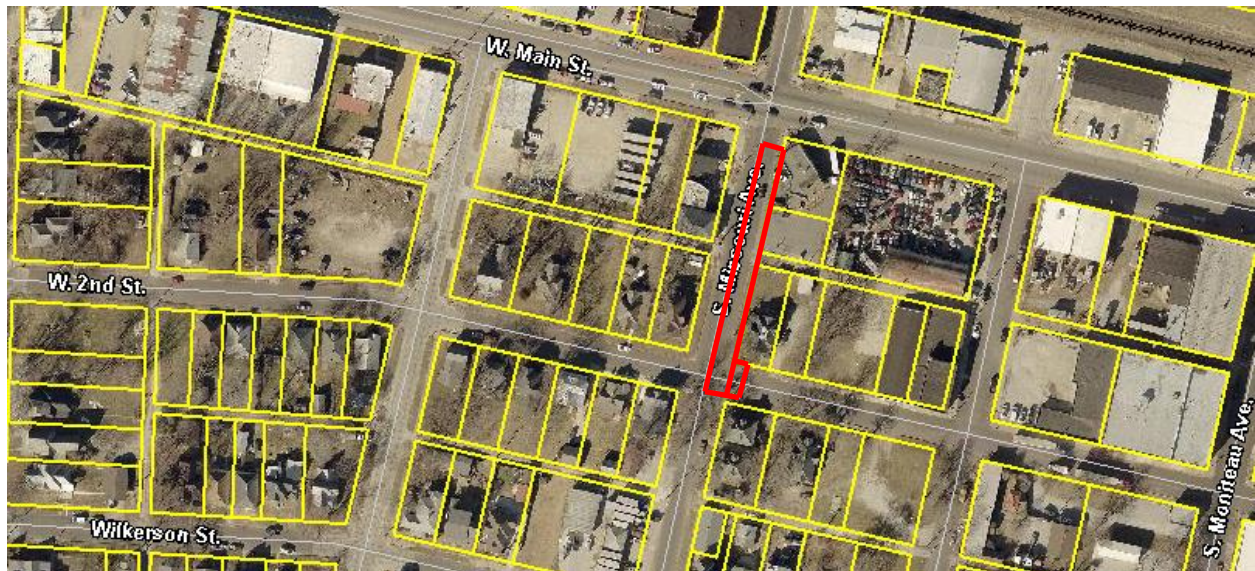
# PUBLIC SERVICE ANNOUNCEMENT

Contact: Public Works  
Phone: (660) 827-3000, ext. 1166

FOR IMMEDIATE RELEASE  
8:30 A.M. CDST, August 6, 2019

### **LANE RESTRICTION ON S. MISSOURI AVE. BETWEEN W. 2<sup>ND</sup> ST. AND W. MAIN ST. AND INTERSECTION CLOSED AT W. 2<sup>ND</sup> ST. AND S. MISSOURI AVE.**

(SEDALIA, MISSOURI): The Water Division's contractor is scheduled to complete removal of valves and pipe from the roadway beginning at the intersection of S. Missouri Ave. between W. 2<sup>nd</sup> St. and W. Main St. resulting in a lane restriction down to one lane. The work will begin on Tuesday, Aug. 6, 2019 at 7:00 a.m. and be completed by 5:30 p.m. on Wednesday, Aug. 7, 2019. Additionally, the eastside of the S. Missouri Ave. and W. 2<sup>nd</sup> St. intersection will be closed during this same period. Motorists are advised to find alternate routes during this period. The work is dependent on weather allowing for timely completion and may be delayed due to rain.



We apologize for any inconvenience these road closures and lane restrictions may cause as we work to improve the City's water distribution system and maintain public spaces.

**WHEN: 7:00 A.M., TUES., AUG. 6, 2019 TO 5:30 P.M., WED., AUG. 7, 2019**

**WHERE: LANE RESTRICTION -- S. MISSOURI AVE. BETWEEN W. MAIN ST. AND W. 2<sup>ND</sup> ST.  
ROADWAY INTERSECTION CLOSED -- EASTSIDE OF S. MISSOURI AVE. AND W. 2<sup>ND</sup>  
ST. INTERSECTION**

**WHY: WATER LINE AND VALVE REPLACEMENTS**